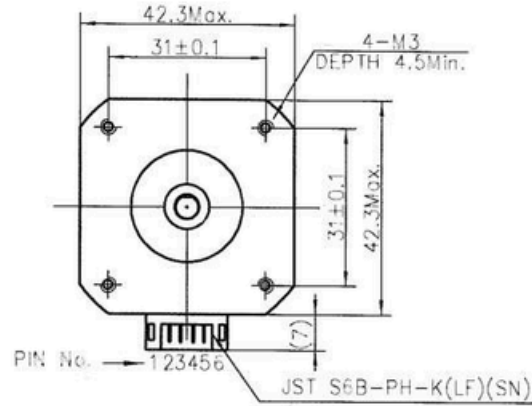
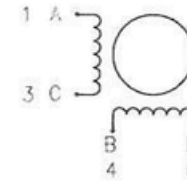


4611110011492



Wiring Diagram



Exciting Sequence vs. Direction of Rotation

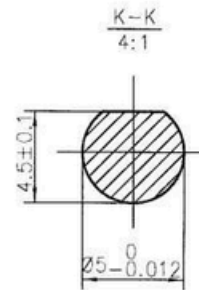
STEP	A	B	C	D	CCW
1	+	+	-	-	↑
2	-	+	+	-	
3	-	-	+	+	
4	+	-	-	+	

CW ↓

Clockwise view from mounting side

Specifications

1. Number of Phase	2
2. Step Angle	1.8°
3. Rated Voltage	3.3V DC
4. Rated Current	1.5Amp
5. Holding Torque	0.62N.mTyp (Two phase on/rated current)
6. Phase Resistance	2.2ohm±10%(20°C)
7. Phase Inductance	4.9mH±20%(1kHz 1V rms)
8. Rotor Inertia	82g.cm ²
9. Motor Weight	360g
10. Insulation Class	B(130°C)



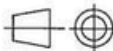
Label Detail

MOONS' STEPPING MOTOR
TYPE MS17HD6P4150-M
XXXXXXXX YY/MM/DD

Work Order Date Format

Unit: mm

FIRST ANGLE METHOD



Tolerances for linear and angular dimensions without individual tolerance indications
GB/T 1804-m eqv ISO 2768-11:m

Geometrical tolerance for features without individual tolerance indications
GB/T 1184-k eqv ISO 2768-2:k

REV.	REVISION RECORD	DATE	UNLESS OTHERWISE SPECIFIED	NAMES	SIGNATURE	DATE	Type: MS17HD6P4150-M	Rev.A	SCALE 1:1	Sheet 1 of 1
A	Original revision	2013.04.03								

PIVEXIN
TECHNOLOGY